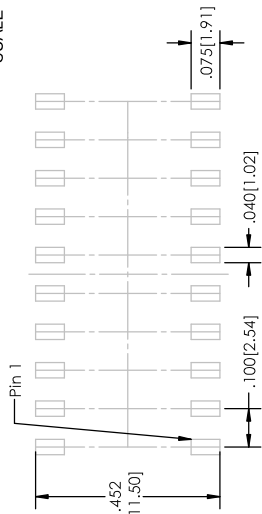
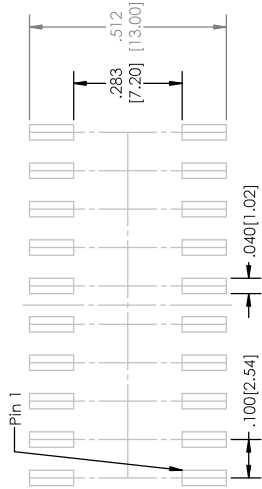


Recommended P.C. Board Layout
SCALE 4:1

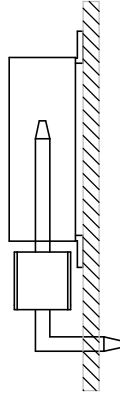


SINGLE ROW



DOUBLE ROW

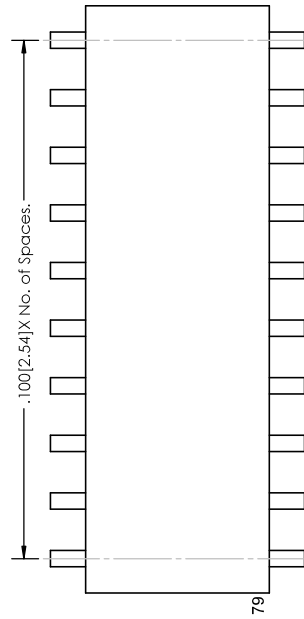
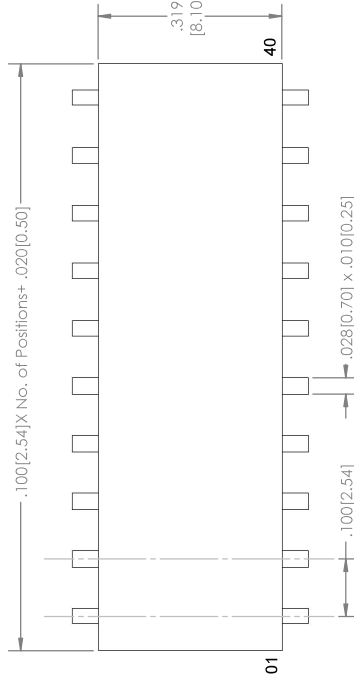
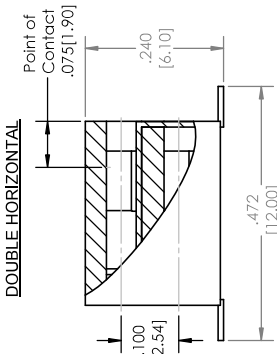
APPLICATION



SINGLE HORIZONTAL



DOUBLE HORIZONTAL



SINGLE HORIZONTAL

DOUBLE HORIZONTAL

SMBC-1 XX - X - 02 - XX - H - XXX - XX - LF - (H)
(A) (B) (C) (D) (E) (F) (G) (H)

- A. Pins Per Row
- 01 Through 40
- B. Row Specification
- S= Single Row
- D= Double Row
- C. Surface Mount
- See Plating Options below
- D. Plating Options
- See Plating Options below
- E. Direction
- H= Horizontal
- F. Polarized Position
- Leave blank if not needed
- If required, specify empty pin position
- e.g. 012 for Pin 12
- G. Packing Information
- TR= Tape and Reel
- TB= Tube
- If left blank, packaging at MLE's discretion
- Pad may be metal, mylar or plastic
- H. Lead Free

- Mates With:
- BSTC TSHCR
 - BSTCM TSHCRE
 - BSTCR TSHCRSM
 - BSTCRSM TSHR
 - BSTS TSHRE
 - BSTCM TSHS
 - LTSHCR TSHSCM
 - LTSHCRE TSHSM
 - LTSHR ULTSHM
 - LTSHRE ULTSHC
 - LTSHM ULTSHCSR
 - TSHC

Plating options	
G	-10u Gold on Contact Area/ Flash on Tail
T	-Matte Tin all Over
GT	-10u Gold on Contact Area/ Matte Tin on Tail
H	-30u Gold on Contact Area/ Matte Tin on Tail
F	-Gold Flash over Entire Pin
FT	-Gold Flash on Contact Area/ Matte Tin on Tail

Specifications:
 Insertion Depth: .145[3.68] to .250[6.35]
 Insertion Force- Per Contact- H Plating:
 5oz. [1.39N] avg with .025[0.64mm] sq. pin
 Withdrawal Force- Per Contact- H Plating:
 3oz. [0.83N] avg with .025[0.64mm] sq. pin
 Current Rating: 3.0 Amperes
 Insulation Resistance: 5000M Ohms Min.
 Dielectric Withstanding: 500V AC
 Contact Resistance: 20M Ohms Max.
 Operation Temperature: -40°C to +105°C
 Max. Process Temperature
 Peak: 260°C up to 20 secs.
 Process: 230°C up to 60 secs.
 Wave: 260°C up to 6 secs.
 Reflow: 260°C up to 10 secs.
 Manual Solder: 350°C up to 5 secs.

Materials:
 Contact Material: Phosphor Bronze
 Insulator Material: Nylon 6T
 Plating: Au or Sn over 50u" (1,27) Ni

Tails may be clipped to achieve specific dimensions.
 Products are subject to change without notice.

UNLESS OTHERWISE SPECIFIED:
DIMENSIONS ARE IN INCHES
 TOLERANCES:
 ONE DECIMAL ±.100
 TWO DECIMAL ±.010
 THREE DECIMAL ±.005
 FOUR DECIMAL ±.002

REV H
 SCALE 6:1
 SHEET 1 OF 1

MAJOR LEAGUE Electronics

2533 Continental Blvd.
 Jeffersonville, IN 47130
 Phone: 812-457-0414
 Fax: 812-457-04175
 E-Mail: mlk@majorleague.com

TITLE: SMBC-1-H SERIES
 SIZE: DWG. NO. C

DATE: 10/03/16
 DRAWN: GWE
 CHECKED: GWE
 ENG. APPR.:
 MFG. APPR.:

INSURANCE COMPANY/TOLERANCE P/B:
 MATERIAL:
 P/B#:
 DO NOT SCALE DRAWING

PROPERTY AND CONFIDENTIALITY NOTICE:
 THE INFORMATION CONTAINED IN THIS DOCUMENT IS THE PROPERTY OF Major League Electronics, ANY REPRODUCTION OR TRANSMISSION OF THIS INFORMATION WITHOUT THE WRITTEN PERMISSION OF Major League Electronics IS PROHIBITED.